



Search ...

HOME

320 S CANAL STREET

# New Urban Park Opens At 320 S Canal Street In West Loop Gate

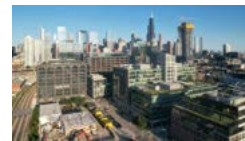


ADVERTISEMENT

## FEATURE STORIES



320 S Canal Street park. Rendering by Goettsch Partners



MARCH 31,  
2023

**A Full  
Breakdown of  
West  
Loop's  
Development  
Boom**



MARCH 15,  
2023

**1000M  
Begins  
to Rise  
Above  
South  
Loop**

BY: JACK CRAWFORD 7:45 AM ON JUNE 17, 2022

## Skyline

---

A new 1.5-acre urban park known as the has opened at **320 S Canal Street** in **West Loop Gate**. This new space designed by Confluence was built in tandem with the new 52-story **BMO Tower**. **Riverside Investment & Development** and **Convexity Properties** are the developers behind this overall project, while the design of the tower itself was envisioned by Chicago-based firm **Goettsch Partners**.

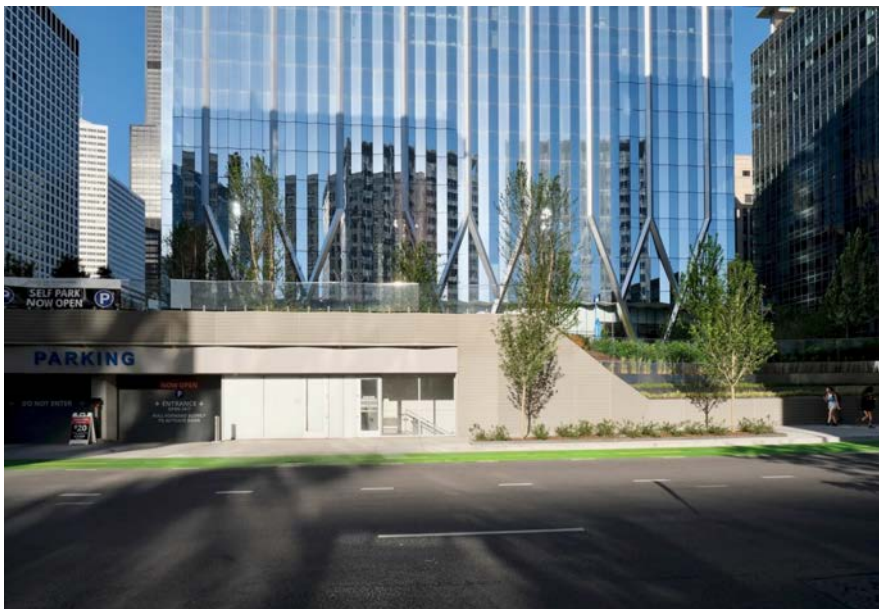
Follow on Instagram



320 S Canal Street. Photo by Jack Crawford



320 S Canal Street. Photo by Jack Crawford



320 S Canal Street. Photo by Jack Crawford



320 S Canal Street. Photo by Jack Crawford



320 S Canal Street. Photo by Jack Crawford



320 S Canal Street. Photo by Jack Crawford

Occupying a former parking garage, the park provides much needed greenery to the vicinity. Various flora, trees, and grass spaces predominate, with paths and seating areas woven throughout. The layout of the park employs an oval-shaped motif that complements the sharp angles of the tower's aluminum trusses and corrugated Vision Glass curtain wall.



320 S Canal Street. Photo by Jack Crawford



320 S Canal Street. Photo by Jack Crawford



320 S Canal Street. Photo by Jack Crawford



320 S Canal Street. Photo by Jack Crawford

The tower is being anchored by BMO Harris Bank as its primary tenant, set to occupy 500,000 of the 1.5 million total square feet. The Class A offices within this 727-foot-tall skyscraper feature 12-foot ceiling spans and private terraces with sweeping city views for select floors. Beyond the immediate access to the park, tenant amenities include a fully-equipped fitness center, a large conference center, and dining options at the base.





320 S Canal Street. Photo by Jack Crawford



320 S Canal Street. Photo by Jack Crawford



320 S Canal Street. Photo by Jack Crawford



320 S Canal Street. Photo by Jack Crawford



320 S Canal Street. Photo by Jack Crawford

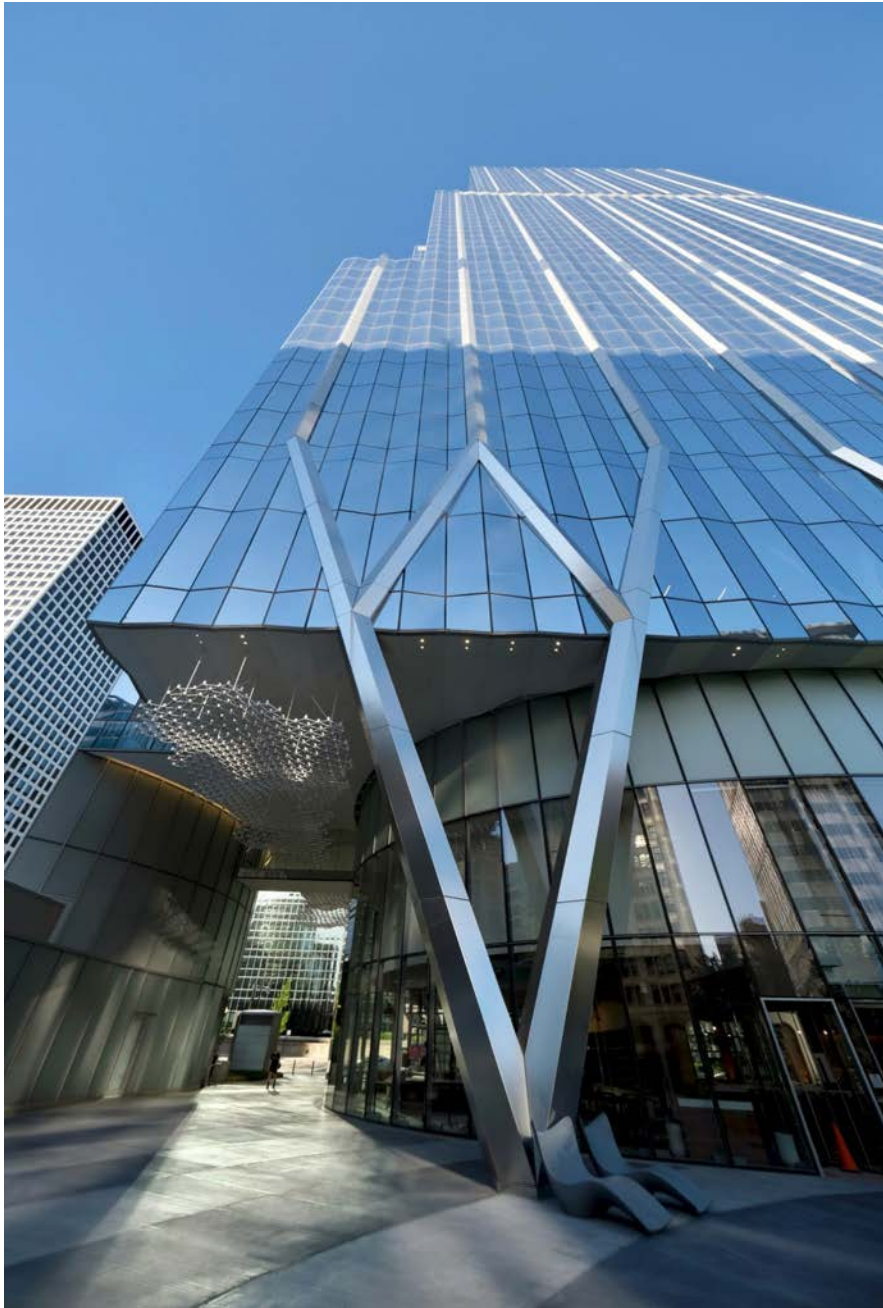


320 S Canal Street. Photo by Jack Crawford



320 S Canal Street. Photo by Jack Crawford

Underground is a parking garage able to accommodate 350 vehicles, while public transit offers service for the CTA Blue Line via a three-minute walk south as well as bus service for Routes 7, 28, 37, 60, 121, 124, 125, 126, 151, 156, 157, 192, and 755. Adjacently north of the site is Union station, with trains for both the Metra and Amtrak.



320 S Canal Street. Photo by Jack Crawford